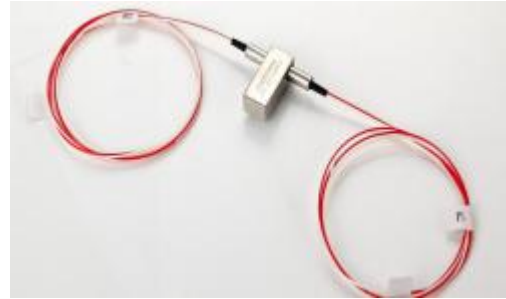


2×2R Fully Optical Switch

Features

Low Insertion Loss
 Wide Wavelength Range
 Low Crosstalk
 High Stability, High Reliability
 Epoxy-free on Optical Path
 Latching and Non-latching



Applications

R&D in Laboratory
 System Monitoring
 OADM
 MAN

Performance

Parameters		2×2R	
WavelengthRange	nm	850-1310	1310/1550
Testing wavelength	nm	850/1310	
Insertion Loss	dB	Typ:0.8, Max:1.2	
Return Loss	dB	≥30	≥50
Crosstalk	dB	≥35	≥50
PDL	dB	≤0.05	
WDL	dB	≤0.25	
TDL	dB	≤0.25	
Repeatability	dB	≤±0.02	
Power Supply	v	3.0 or 5.0	
Lifetime	cycle	≥10 ⁷	
Switch Time	ms	≤8	
Transmission	mW	≤500	
Operating perature	℃	-40~+85	
Storage	℃	-40~+85	
Weight	g	16	
Dimension	mm	(L)28.5×(W)12.6×(H)8.5(±0.2)	

Above specification are for device without connector

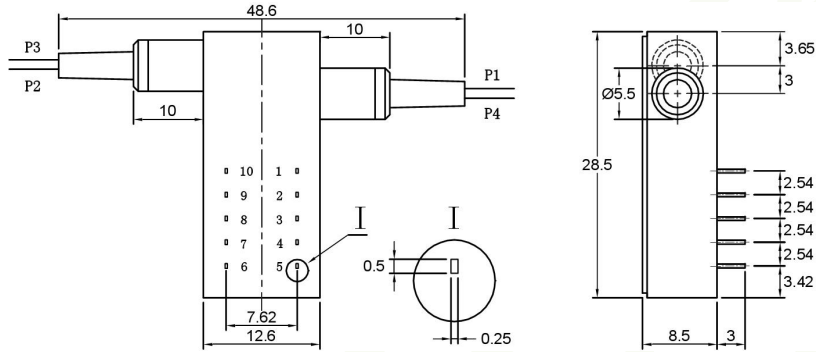
Pins

Optical Path		Electric Drive				Sensor Status			
2×2		1	5	6	10	2-3	3-4	7-8	8-9
Latching	P1-P2、 P3-P4	--	--	GND	V+	Close	Open	Open	Close
	P1-P4、 P3-P2	V+	GND	--	--	Open	Close	Close	Open
Non-Latching	P1-P2、 P3-P4	--	--	--	--	Close	Open	Open	Close
	P1-P4、 P3-P2	V+	--	--	GND	Open	Close	Close	Open

Optical Route



Dimension



Electric

Specifications	Voltage	Current	Resistance
5V latching	4.5~5.5	36~44mA	125Ω
5V non-latching	4.5~5.5	26~32mA	175Ω
3V latching	2.7~3.3	54~66mA	50Ω
3V non-latching	2.7~3.3	39~47mA	70Ω

Ordering Information

Mode	Wavelength	Voltage Type	Control Model	Fiber Type	Fiber Diameter	Fiber Length	Connector
S:SM	85=850nm	3=3V	L=Latching	5=50/125	25=250um	05=0.5m	0=None
M:MM	13=1310nm	5=5V	N=Non-Latching	6=62.5/125	90=900um	10=1.0m	1=FC/PC
	14=1490nm			9=9/125	20=2.0mm	15=1.5m	3=FC/APC
	15=1550nm						4=SC/PC
	62=1625nm						5=SC/APC
	65=1650nm						6=ST/PC
	13/15=1310/1550nm						7=ST/APC
							8=LC/PC
							9=LC/APC