

## Optical fiber collimator

### Features

Wide bandwidth  
 Low insertion loss  
 High channel isolation  
 Exceptional reliability and stability

### Applications

Optical amplifiers  
 CATV  
 WDM system  
 CATV system



### Specification (SM single fiber collimator)

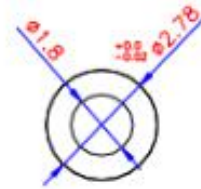
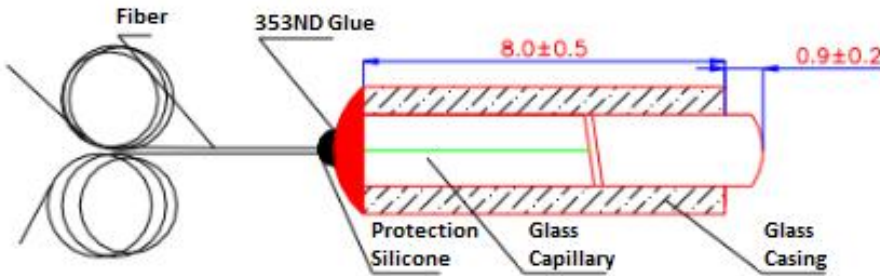
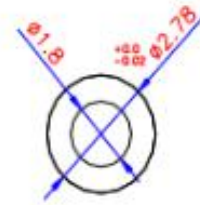
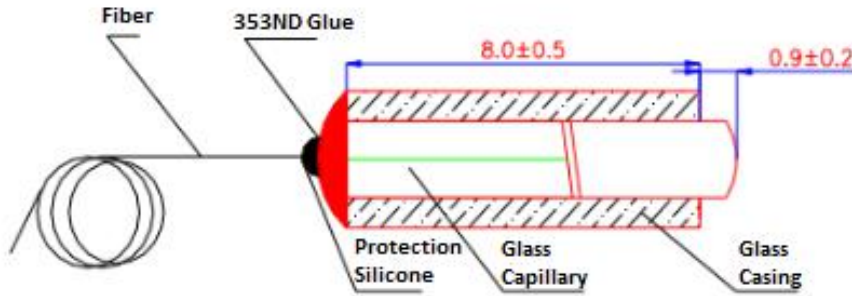
Parameters	unit	P Grade
Center wavelength( $\lambda_c$ )	nm	1310/1550
Typ.Insertion Loss( $\lambda_c$ at 23°C) at 5mm	dB	$\leq 0.2$
Max.Insertion Loss( $\lambda_c$ at 23°C) at 5mm	dB	$\leq 0.25$
Return Loss(at 23°C)	dB	$> 60$
Lens Type	-	C-Lens
Working Distance(mm)(at 23°C)	mm	5 or specify
Beam diameter	mm	0.35
Power Handling	mW	500
Fiber Type	-	SM-28E
Fiber length	M	2.0
Bandwidth(nm)	-	$\pm 30$
Operation Temperature	°C	-20 to +70
Storage Temperature	°C	-40 to +85
Package Dimensions	mm	3.20x10mm or 1.6x10mm gold plated SS tube 2.8 or 2.7 x8mm glass tube 1.6x7mm,1.8x8mm mini glass tube vustom size

Note :IL is 0.15dB higher and RL is 5dB lower for each connector added

### Specification(SM dual fiber collimator)

Parameters	unit	P Grade
Center wavelength( $\lambda_c$ )	nm	1310/1550
Typ.Insertion Loss( $\lambda_c$ at 23°C) at 5mm	dB	$\leq 0.22$
Max.Insertion Loss( $\lambda_c$ at 23°C) at 5mm	dB	$\leq 0.25$
Return Loss(at 23°C)	dB	$> 60$
Lens Type	-	C-Lens
Working Distance(mm)(at 23°C)	mm	5 or specify
Beam diameter	mm	0.35
Power Handling	mW	500
Fiber Type	-	SM-28E
Fiber length	M	2.0
Bandwidth(nm)	-	$\pm 30$
Operation Temperature	°C	-20 to +70
Storage Temperature	°C	-40 to +85
Package Dimensions	mm	3.20x10mm or 1.6x10mm gold plated SS tube 2.8 or 2.7 x8mm glass tube

### Shape and dimensions

**Ordering Information**


Port	Package	Wavelength	Grade	Pigtail Jacket	Fiber Length	Connector
1=Single fiber 2=dual fibre	1=Gold Plated 2=Glass Tube	15=1550nm 13=1310nm Or other	P=P Grade A=A Grade	1=250um bare fiber 2=900um	1=0.5m 2=2m 3=3m	0=None 1=FC/APC 2=FC/PC 3=SC/APC 4=SC/PC 5=LC/PC